

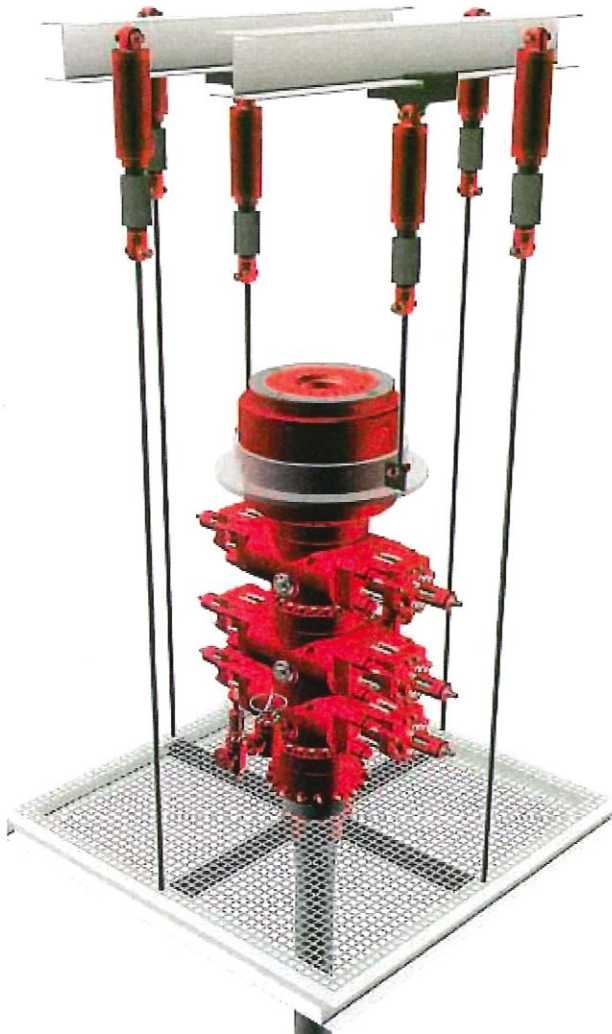


**CONTROL
FLOW
INC.**



FLOCON MO-COMP **WESTECH** RETSCO

CFI-RETSCO Blowout Preventer/Conductor Pipe Tensioning System

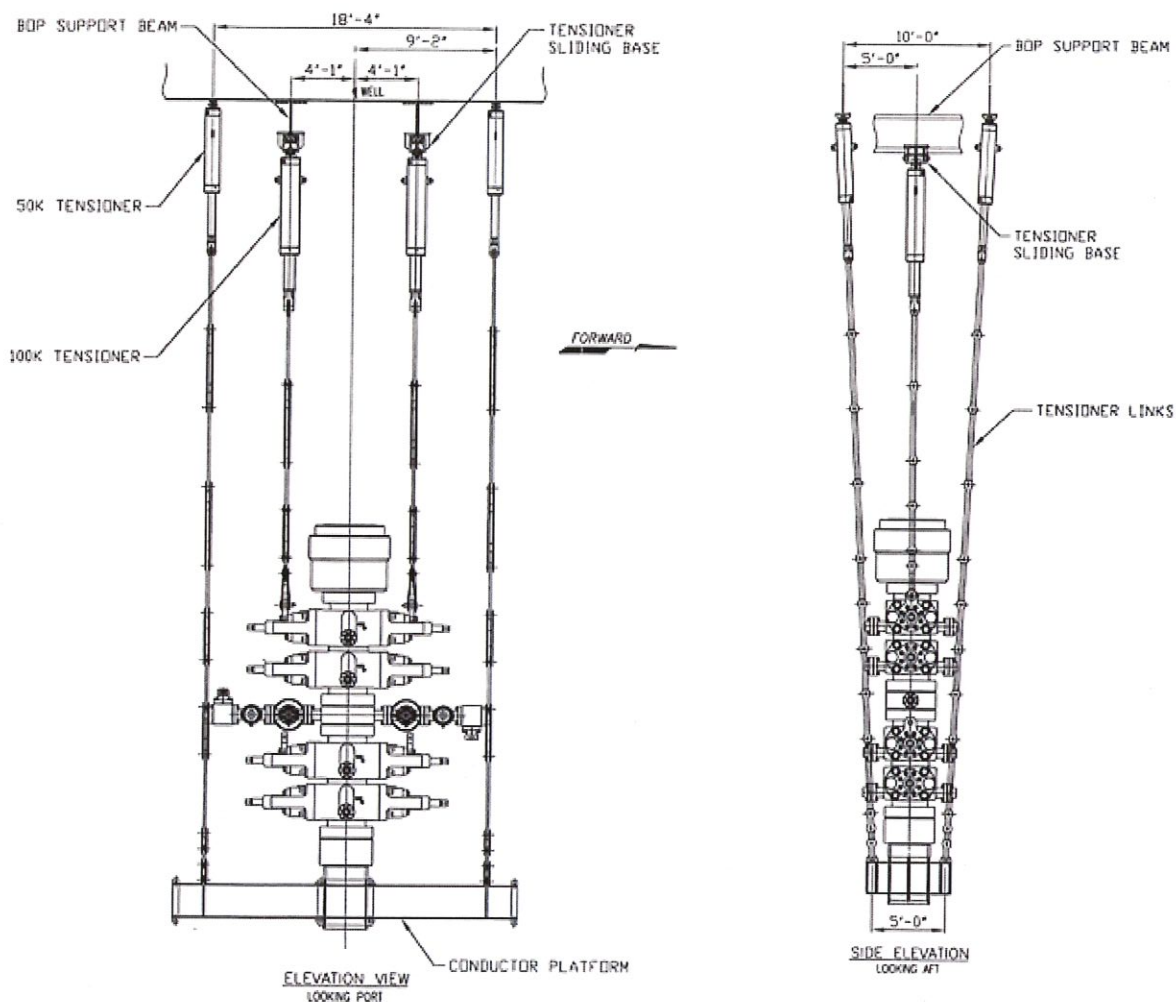


- The CFI-RETSCO BOP/Conductor Pipe tensioning system is based on a 36" Stroke Cylinder, in a rod end down, tension type application.
- The system is available in two configurations, hydraulic and gas charged. The hydraulic system operates from the BOP closing unit using one of the spare functions, if no spare functions are available, then a small portable hydraulic unit can be supplied. The gas charged system is completely self-contained using dry nitrogen.
- The rod and piston utilizes low friction, long lasting seals providing extended operation before maintenance is required. The rods are stainless steel tube with special coating that provides corrosion protection. The cylinder assembly is designed for quick and easy servicing of the rod and piston seals.
- The BOP/Conductor pipe tensioning system uses a small stainless steel control panel that provides indication and control of supply pressure and visual read out of BOP and Conductor Pipe tension. A driller's monitor Panel is also available providing BOP and Conductor Pipe tension read-out to the driller.

Control Flow/Mo-Comp Products

Why The CFI-RETSCO Blowout Preventer/Conductor Pipe Tensioning System?

- Allows use of smaller surface conductors such as 9 5/8" or 13 3/8" in any water depth. Resulting in a significant well cost savings.
- Allows larger conductor sizes (20" thru 48") to be used in greater water depths.
- The Conductor Tensioner applies a "spring" force to the top of the conductor pipe, preventing large cyclic tensions being induced in conductors when large wave forces occur.
- The Tensioner prevents overload of the conductor deck as compared to a fixed jacking system.



Control Flow/Mo-Comp Products

Efficient Tensioner Solutions

Contact a Control Flow, Inc. sales representative for further detailed information

Control Flow, Inc. • 9201 Fairbanks N. Houston Rd. • Houston, Texas 77064-6206 • Phone (281) 890-8300
Fax (281) 890-3947 • E-mail: sales@controlflow.com • Web: www.controlflow.com
Copyright Control Flow, Inc. 2009