

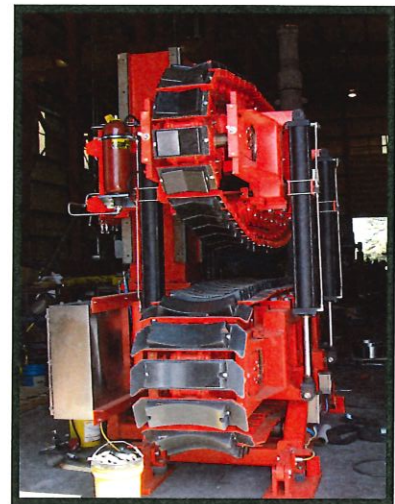
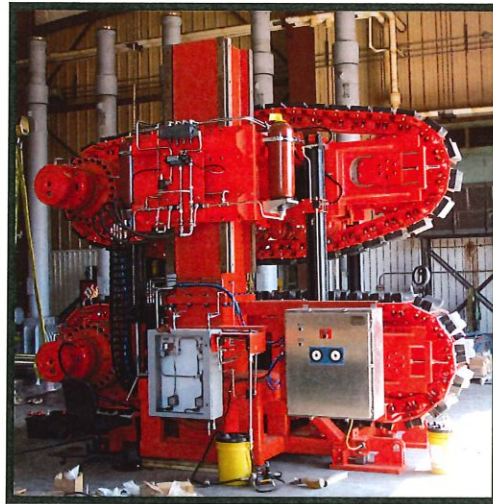


**CONTROL
FLOW
INC.**



FLOCON MO-COMP WESTECH RETSCO

“E” Series Pipe Tension Systems



WesTech Pipe Tensioning Equipment is engineered specific to customer requirements:

- Can accurately hold linear tension on pipelines laid offshore using constant tension.
- Offered in both electric and hydraulic drive utilizing digital electronic controls.
- Power supplies design optimizes performance of the equipment.
- Suspension suitable for range of pipe diameters and coatings.
- Accommodates wide range of track to pipe contact compliance.
- Suitable for use with tubing or umbilical laying operations.
- Tension capacity up to 100,000 pounds of linear tension at 100 feet per minute.
- Maximum pipe diameter up to 30 inches.

Control Flow/WesTech Products

Superior Pipe Lay and Handling Solutions

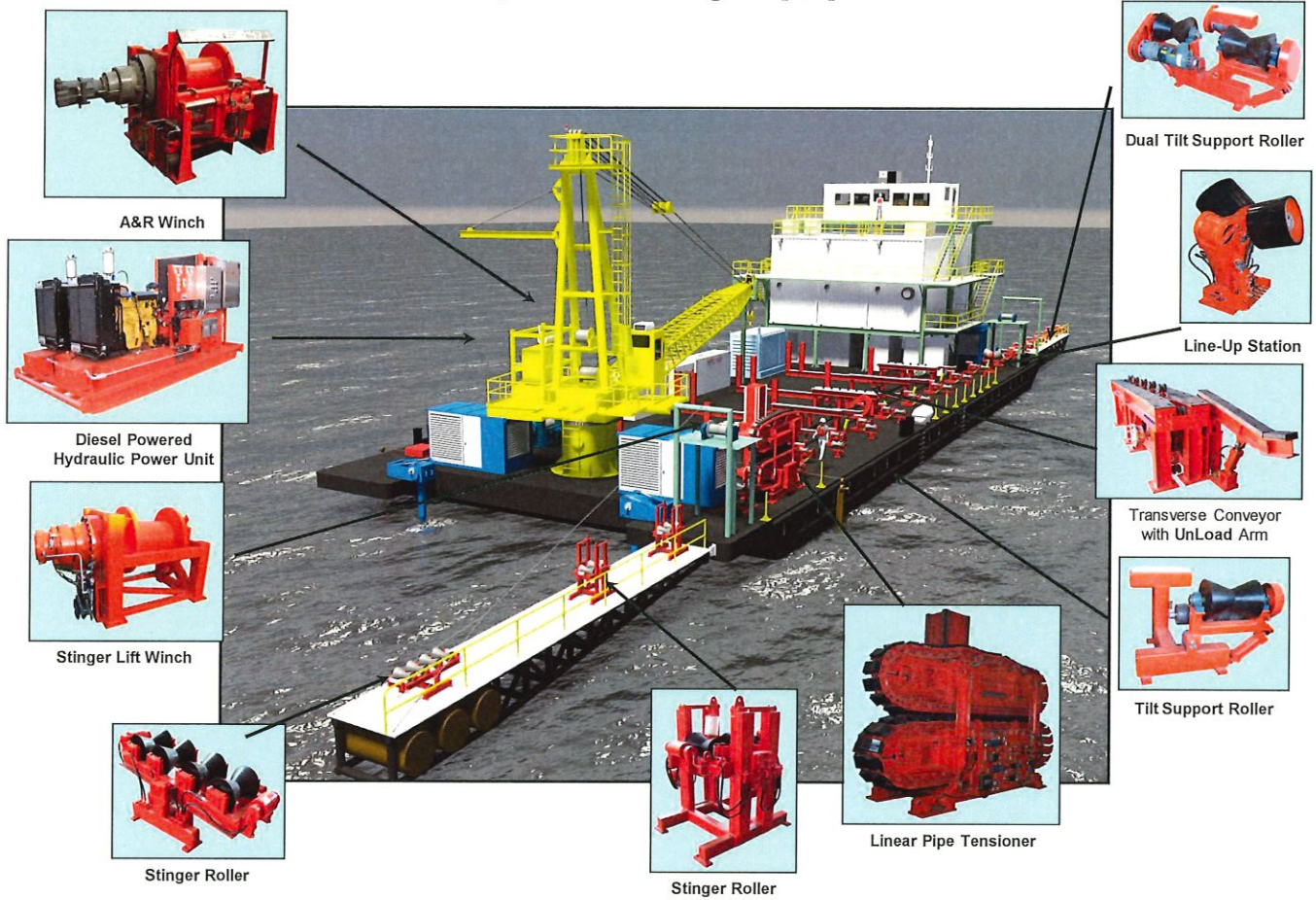
Contact a Control Flow, Inc. sales representative for further detailed information

Control Flow, Inc. • 9201 Fairbanks N. Houston Rd. • Houston, Texas 77064-6206 • Phone (281) 890-8300

Fax (281) 890-3947 • E-mail: sales@controlflow.com • Web: www.controlflow.com

Copyright Control Flow, Inc. 2013

WesTech E-Series Pipe Tensioner, A&R Winch, and Pipe Handling Equipment



Control Flow/WesTech Products

Superior Pipe Lay and Handling Solutions

Contact a Control Flow, Inc. sales representative for further detailed information

Control Flow, Inc. • 9201 Fairbanks N. Houston Rd. • Houston, Texas 77064-6206 • Phone (281) 890-8300

Fax (281) 890-3947 • E-mail: sales@controlflow.com • Web: www.controlflow.com

Copyright Control Flow, Inc. 2013