



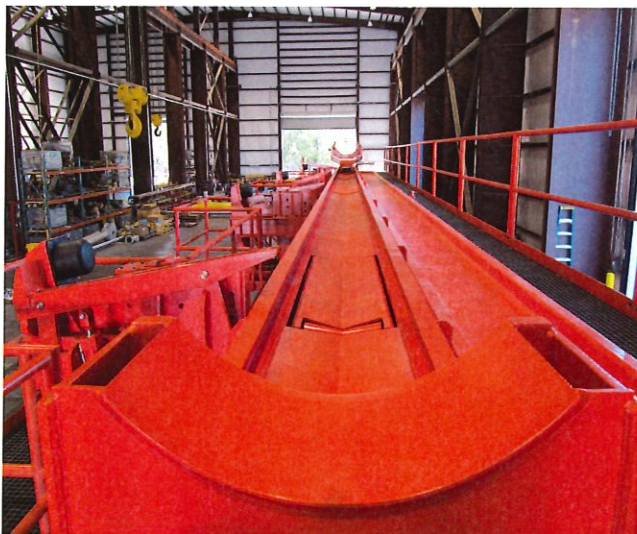
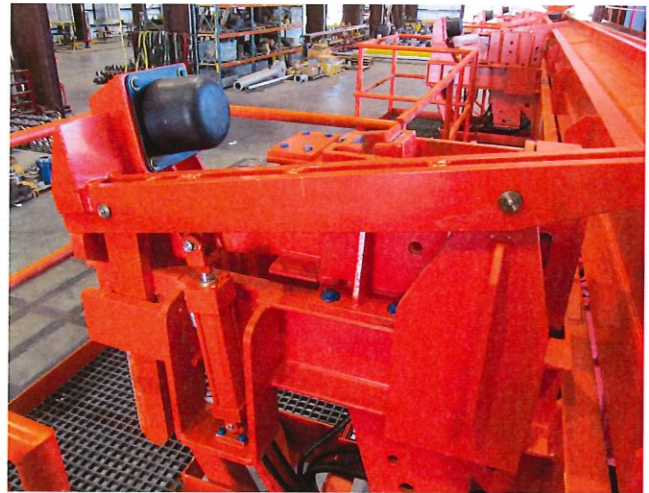
**CONTROL  
FLOW  
INC.**



**FLOCON MO-COMP *WESTECH* RETSCO**

## **Pipe Racker and Handler Equipment**

*The CFI WesTech Pipe Handler System is designed to store pipe, pick pipe up and present it to the derrick for drilling, production or workover applications.*



## **Control Flow/WesTech Products**

*Superior Pipe Racker and Handling Solutions*

Contact a Control Flow, Inc. sales representative for further detailed information

Control Flow, Inc. • 9201 Fairbanks N. Houston Rd. • Houston, Texas 77064-6206 • Phone (281) 890-8300

Fax (281) 890-3947 • E-mail: [sales@controlflow.com](mailto:sales@controlflow.com) • Web: [www.controlflow.com](http://www.controlflow.com)

Copyright Control Flow, Inc. 2013





## **CFI Pipe Handler System Capabilities:**

**WesTech Pipe Handler System is engineered to each specific customer's requirements:**

- Designed to deliver pipe or tubular products to the derrick with Telescopic Skate.
- Carry's pipe/tubulars to and away from the derrick for transfer by overhead crane.
- Pipe/tubular capability includes: Risers, Drill Pipe, Casings and Drill Collars.
- Tubular Weight Limit: 6,500 lbs. per joint.
- Tubular Capacity on Skate: Casing - 30" O.D.; Riser with Buoyancy (50" dia. x 75' long); Telescopic Riser (26" dia. x 78' long) and maximum weight 80,000 lbs. with landing pad and support adaptor.
- Multiple joints of tubulars can be loaded onto Indexer Ramp Arms for delivery staging.
- Maximum Tubular O.D. on Indexer Ramp Arms: Casing- 13.38"; Drill Pipe- 6.5"; Drill Collars- 9.5".
- Indexer Ramp Arm Capacity: Tubular Length 28-45 FT.
- Maximum Skate Speed: Pipe Skate - 400 FPM; Main Skate - 200 FPM.
- Cycle Rate: One joint/minute.

## **Control Flow/WesTech Products**

### ***Superior Pipe Racker and Handling Solutions***

**Contact a Control Flow, Inc. sales representative for further detailed information**

Control Flow, Inc. • 9201 Fairbanks N. Houston Rd. • Houston, Texas 77064-6206 • Phone (281) 890-8300

Fax (281) 890-3947 • E-mail: [sales@controlflow.com](mailto:sales@controlflow.com) • Web: [www.controlflow.com](http://www.controlflow.com)

Copyright Control Flow, Inc. 2013